



Organisation of African Geological Surveys
Organisation des Services Géologiques Africains
Organização de Serviços Geológicos Africanos

AMGI MEETING

27-28 OCTOBER 2014

ADDIS ABABA, ETHIOPA

Mr Fhatuwani Ramagwede
OAGS Secretariat
Council for Geoscience

BACKGROUND

- The African Minerals Geoscience Initiative (AMGI) consultative meeting took place at the African Union Commission headquarters. Organized by the Department of Trade and Industry of the African Union Commission
- The main goal of the project is to develop a comprehensive knowledge of Africa's mineral endowment and the expected result is to develop and obtain improved geological and mineral information systems to underpin investment in exploration and mining development.
- This would be done with the ultimate goal of seeking to facilitate broad-based governance changes in the mineral and other downstream and side-stream sectors, including: (i) improved licensing processes and procedures that efficiently leverage the natural resource wealth of countries; (ii) improved spatial planning, infrastructure development, forest and wildlife conservation through the use of regional resource corridors; and (iii) sustainable development policies for natural resources management.



ACCESSIBILITY

- Ownership of data will be with Member States.
- The custodian of data will be entrusted with National Geological Survey
- Disclosure and access to data will be based on the agreement by both parties
- There should be well developed policies at country level
- The hosting of data should be in an African Facility
- Access to data generated and developed will be based on confidentiality clause which will differ per country



REVENUE

- Nominal cost will be charged for data and products
- Part of the Revenue should be used for capacity building
- Some revenues to be used to support AMGI functioning
- REC's should also consider including data issues into their strategies especially for capacity building

REVENUE MANAGEMENT

- Revenue collection will be based on agreement with each participating country
- Non participating Private sector will pay for data and products



CENTRE OF EXCELLENCE

- Centers of Excellence should be identified within the continent
- Regional and national Centers of Excellence should be identified in each Geographical Region to support the AMGI facility
- Capacity building programme to be implemented to strengthen the institutions



SUSTAINABILITY

- AMGI to establish a sustainability model to ensure continuity after World Bank funding
- Member States to set aside some revenue to support AMGI.
- States and Private Sector should consider setting aside funds to ensure sustainability



PILOT PHASE

- Pilot phase to be conducted in : Mozambique; Tanzania and Zambia
- Other countries in other geographical areas to be included in track one of the project



STATE SELECTION CRITERIA

- Geological Setting: Geological diversity; heterogeneity and cross boundary continuity
- Availability of 1:250 000 minimum and possibility of metadata existence
- Existence of digital elevation model
- Reliable topographic base maps



STATE SELECTION CRITERIA

- Geological Setting: Geological diversity; heterogeneity and cross boundary continuity
- Availability of 1:250 000 minimum and possibility of metadata existence
- Existence of digital elevation model
- Reliable topographic base maps Synergies among country projects and AMGI
- Existence of Technical Infrastructure
- Commitment to AMV Implementation by making available resources



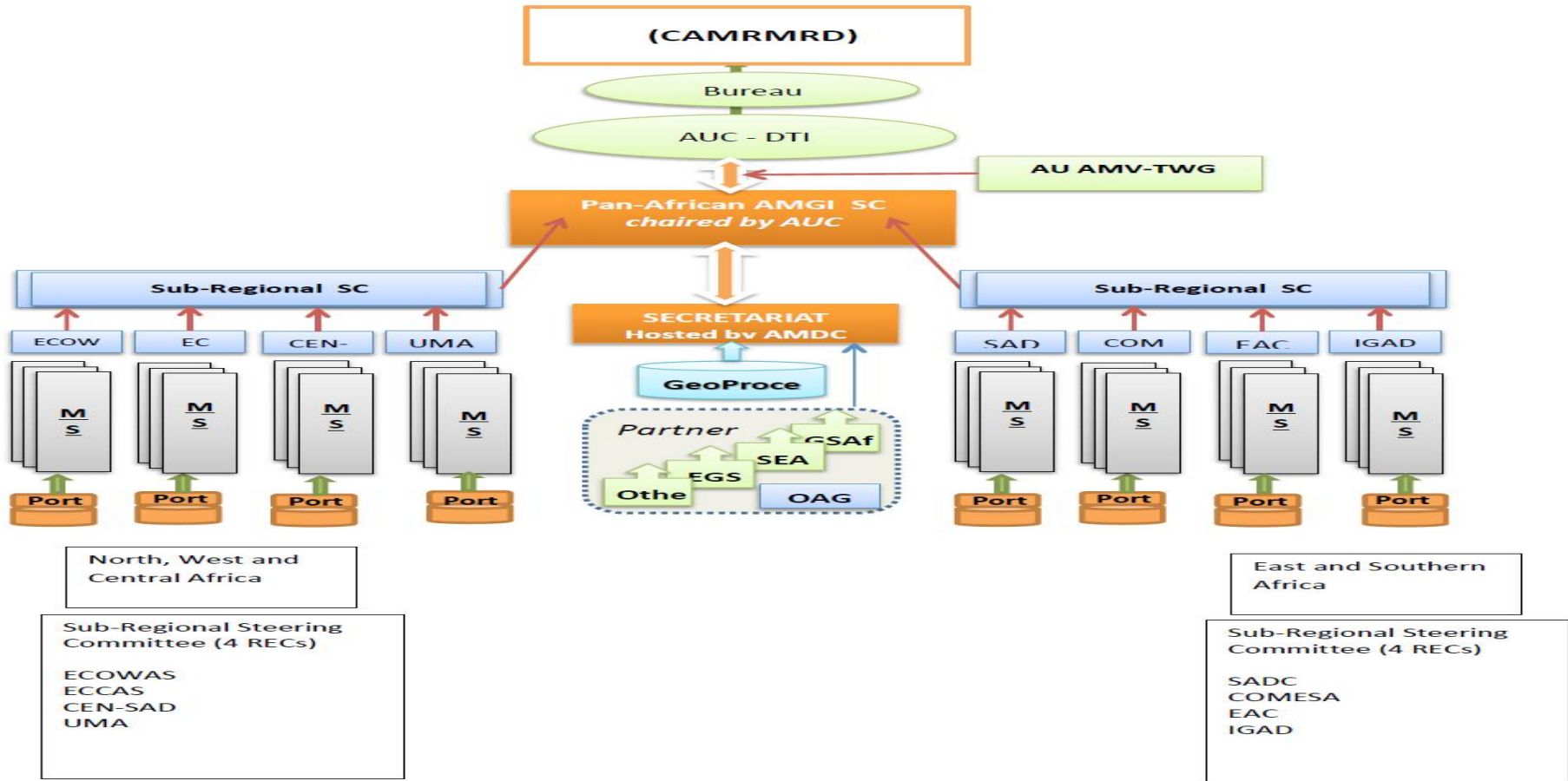
OAGS'S ROLE

- The OAGS will serve as partner to the Secretariat hosted by AMDC



AMGI AU IMPLIMENTATION INSTUTTIONAL STRUCTURE

AMGI AU Implementation Institutional Structures



WAY FORWARD

- **Creation of AMGI Sub-committee and setting up RECS's subcommittees**
- **Final completion of the MDTF preparations process (Internal to the World Bank)**
- **Preparation of the Charter of Rights and Obligations of the AMGI participating countries**
- **Review of Expressions of Interests from AMGI participating countries**
- **Issuance of EOI based on Technical Criteria for the Geo-Processing Facility**
- **REC's Portal institutionalisation process (preparation phase)**
- **Development of Pilot Projects (plan for five components)**
 - **Development of Component-1: Establishing and Institutional Organisational and Management structure**
 - **Component2: Development of Pilot Projects**
 - **Component 3:Development of Track 1: Fast delivery(Five Countries)**
 - **Component-4: Capacity Building Strategy and Enhanced AMGI Strategic planning**
 - **Component 5: Establishing an Operational Facility and Multi-sector uses/applications of both Tracks**
-
- **8. Identification of Centre of Excellence and Capacity building for those already identified organisations- gap analysis.**
- **9. Meeting with Private Sector and Chamber of Mines at the Mining Indaba Feb 2015.**



Thank You



Organisation of African Geological Surveys
Organisation des Services Géologiques Africains
Organização de Serviços Geológicos Africanos